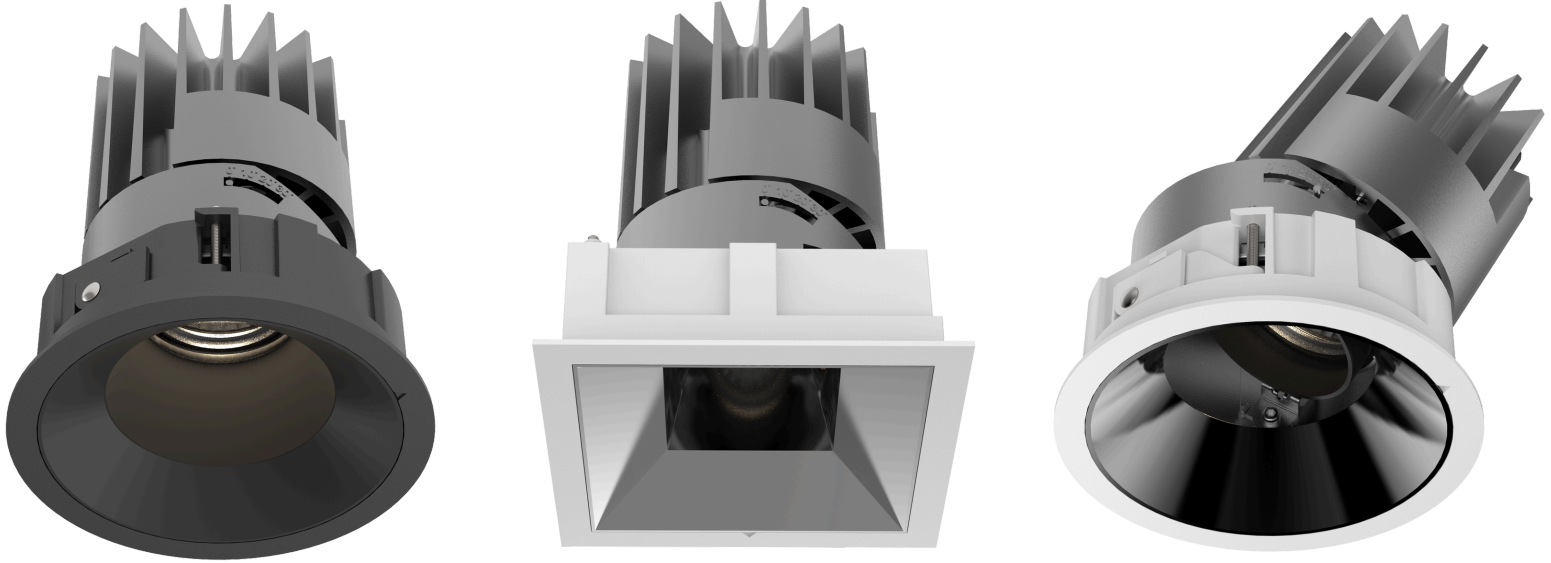


Superior Color Fidelity, Reliable, Configurable, Flicker-Free Lighting



The XDL Downlight Series from Xicato is engineered to offer designers an elegant yet highly configurable recessed lighting solution to meet their stringent requirements and constantly changing need. XDL delivers high quality light with superior color fidelity by integrating Xicato's world class LED light and robust flicker-free driver electronics enabling designers to individualize and optimize each space for every application.

Selecting Xmesh controls option turns every luminaire into a network node within Xicato's Xmesh smart building ecosystem unleashing even more capabilities including wireless control, data collection, and asset tracking. No matter the requirements, XDL is the solution!



Specification Summary

Lighting And Optics

| | |
|-----------------------------|--|
| LED | Xicato XOB/XTM with 1x2 SDCM Color Consistency |
| CCT | 2700K, 3000K, 3500K, 4000K |
| Light Output | 820 to 3100 Lumens |
| CRI Options | CRI ≥90, CRI 95, CRI ≥95 Vibrant |
| LED Rated Life (L70) | >50,000Hrs |
| Beam Angle Options | From 20° (Narrow) to 50° (Wide) |

Electrical

| | |
|--------------------------|---|
| Input Voltage | 120-277V |
| Dimmable | 0-10V (to 1%), DALI-2 (to 0.1%), Xmesh (to 0.1%) |
| Power Consumption | E4: 11.3 to 23.7W; E6: 21 to 38.5W; E6 XTM: 17 to 38W |

Mechanical

| | |
|-------------------------|---|
| Aperture Size | 4" (100mm), 6" (150mm) |
| Shape | Round, Square |
| Reflector Finish | White, Black, Silver, Chrome Black, Chrome Silver |
| Trim Options | Matte White, Matte Black, Trimless |
| Application Type | Adaptive Directional (Fixed at 0° to 30° Tilt), Wall Wash |
| Installation | Retrofit, New Construction, Insulated Ceiling, Chicago Plenum |

Compliance & Warranty

| | |
|----------------------|---|
| Certification | ETL, UL2108, FCC, CE, UKCA |
| Warranty | 5 Years Limited (XOB) / 10 year Limited (XTM) |

Applications

- Commercial Offices and Buildings
- Museums and Art Galleries
- Retail Shops and Malls
- Hotels and Hospitality
- Healthcare facilities and Hospitals
- Schools and Educational Facilities
- Mixed Use and High End Residential



All data shown is nominal and are subject to change without notice.