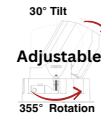
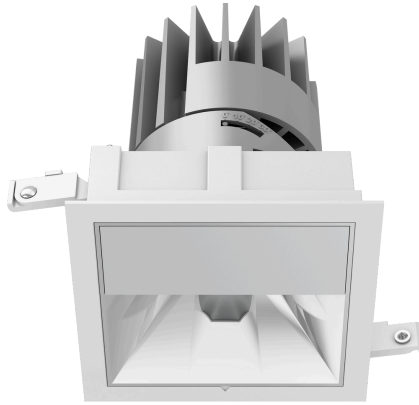


XDL E6

Adaptive Directional | Wall Wash | Fixed to 30° Tilt

PRODUCT SPECIFICATION



Product Features

- Industry leading 5 year warranty*
- Utilizes Xicato XOB LED light source with best in class color consistency (1 X 2 SDCM)
- Superior light quality with leading CRI/R9 of up to 95/90
- World class driver electronics delivering true flicker-free dimming performance
- Cutting edge dimming performance down to 0.1%** with 0-10V, DALI-2 and Xmesh wireless control
- Adaptive 2-in-1 fixture design transforms a fixed downlight to adjustable with a simple adjustment
- Complimentary Wall Wash option delivers the desired lighting accent designers seek
- Classic square or round shape with options of trimmed and trimless to compliment any design
- Flexible lighting design options with variety of light levels, beam angles, and color temperature
- Choose from various install types including retrofit, new construction, and insulated ceilings
- Xicato's Xmesh wireless connectivity enables remote control and monitor from app/dashboard
- Utilize Xicato's smart building ecosystem by adding sensors, switches and asset tags
- Double as emergency lighting with optional battery back-up

Ordering Logic

Model - Trim/Shape/Type - Output/CRI/CCT - Optics/Reflector - Housing Size - Install/Dimming - Emergency

EXAMPLE: E6-WRA-L29030-30DW-E6H-RX10 (XDL E6 6" White Round Adaptive Downlight, 1840Lm, 90CRI, 3000K, 30 Degree White Reflector, Retrofit Housing with XAD 0-10V Control)

Model	Trim	Shape	Function	Output	CRI	CCT
E6 XDL E6	W White	R Round	A Adaptive (0° to 30°)	L2 1840 Lm	90 90	27 2700K
	B Black	S Square	W Wall Wash	L3 2500 Lm	95 95	30 3000K
	T Trimless			L4 3100 Lm	V9² 95 Vibrant	35 3500K
						40 4000K

Optics	Reflector	Housing Size	Install Type	Dimming Control	Emergency Backup
20D 20 Degree	W Matte White	E6H 6" Housing	R Retrofit	X10 0-10V Dim to 1%	Blank No Emergency
30D 30 Degree	B Matte Black		NC New Construction	XD DALI-2 Dim to 0.1%	E12 Emergency 90min @ 12W
50D 50 Degree	S Matte Silver		IC Insulated Ceiling Box	X10W 0-10V with Xmesh Dim to 0.1%	ECA Emergency 90min @ 10W
36W¹ Wall Wash	CB Chrome Black		ICAT IC Box Air Tight	XDW DALI-2 with Xmesh Dim to 0.1%	CA Title 20
	CS Chrome Silver				

Housings can be shipped separately from base downlight. EM includes remote test switch.

*See Xicato 5 Year Limited Warranty

**Down to 1% with 0-10V dimming

¹36W only available for Wall Wash and only available in Matte Silver finish
²CRI 95 Vibrant only available in 3000K

Technical Specifications

Lighting	
LED	Xicato XOB
CCT	2700K, 3000K, 3500K, 4000K
Delivered Lumens	See Table
CRI/R9	CRI 90: ≥90/50, CRI 95: ≥95/90, CRI 95 Vibrant: ≥95/90*
Color Consistency	Xicato XOB with 1x2 SDCM Color Consistency
LED Rated Life (L70)	>50,000Hrs
Optical	
Beam Angle	20°, 30°, 50°
Lens Material	Polycarbonate
UGR	TBD
Electrical	
Input Voltage	120-277V
Frequency	50/60Hz
Dimmable	Yes, 0-10V to 1%; DALI-2, Xmesh Wireless to 0.1%
Power Consumption	See Table
Efficacy	See Table
Mechanical	
Base/Housing	Integrated Aluminum Heatsink / 16-Gauge Rolled Steel
Trim Finish	Matte White, Matte Black
Reflector Finish	White, Black, Silver, Chrome Black, Chrome Silver
Shape	Round, Square
Dimensions (H x Ø Dia)	7.48 x 6.30in (190 x 160mm)
Net Weight	4.13lb (1.875kg)
Max Ambient Temp	35° C (95° F)
Application Type	Adaptive (Adjust from Fixed at 0° to 30° Tilt), Wall Wash
Installation	Retrofit, New Construction, Insulated Ceiling
Certification and Warranty	
Certification	ETL Listed (UL2108), FCC, CE, UKCA
Environmental	RoHS
IP Rating	IP 55 with Lens Only
Warranty	5 years Limited

*CRI 95 Vibrant only available in 3000K CCT

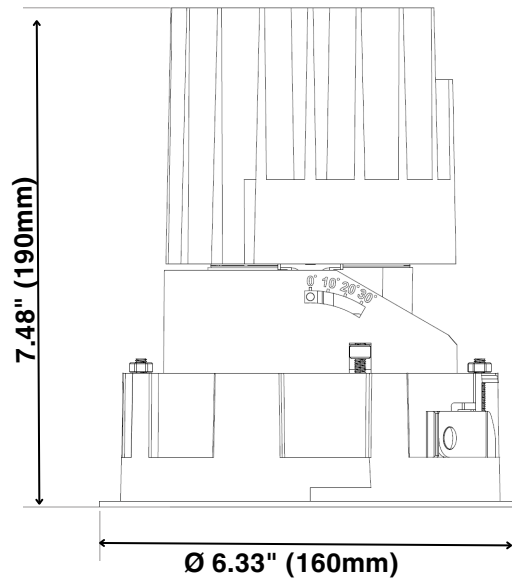
Performance and Efficacy*			
Model	Output (lm)	Power (W)	Efficacy (lm/W)
L2	1845	21.2	87.0
L3	2500	29.3	85.3
L4	3100	37.7	82.2

*All data based on 3000K CRI 90 30° Optics as baseline

Lumen Conversion*		
CCT	CRI	Ratio
3000K	90	1
2700K	90	0.94
3500K	90	1.07
4000K	90	1.1
2700K	95	0.85
3000K	95	0.9
3500K	95	0.97
4000K	95	1
3000K	95 Vibrant	0.9
Beam Angle		Ratio
20°		0.91
30°		1
50°		0.98
Type		Ratio
Adaptive (0° to 30° Tilt)		1
Wall Wash		0.8

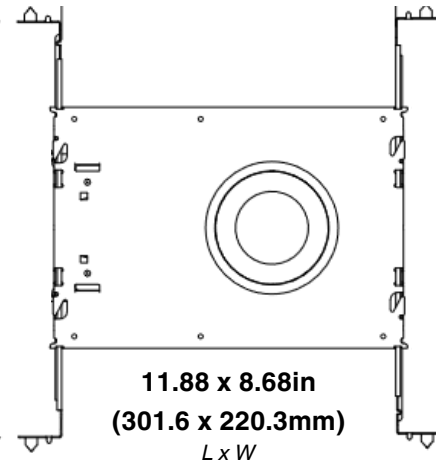
*All conversion based on 3000K CRI 90 30° Optics as baseline

Dimensional Drawings

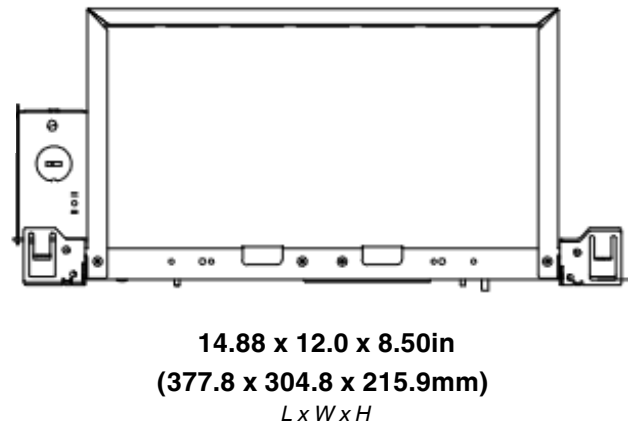


Other Dimensions

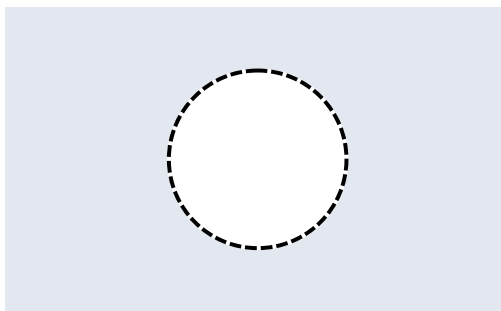
New Construction Plaster Plate



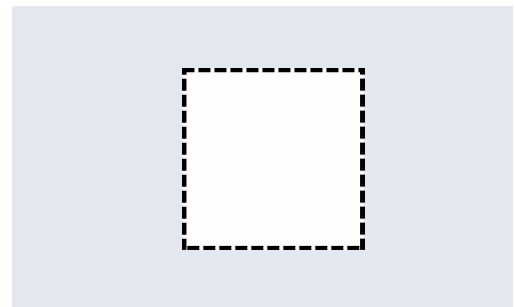
IC / ICAT / Chicago Plenum



Ceiling Cutout Dimension

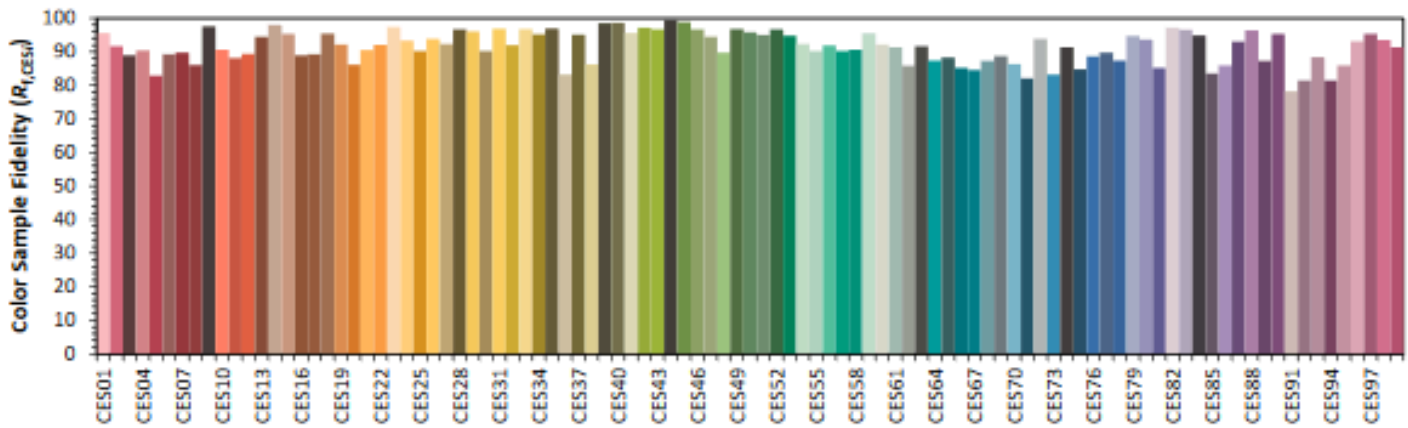
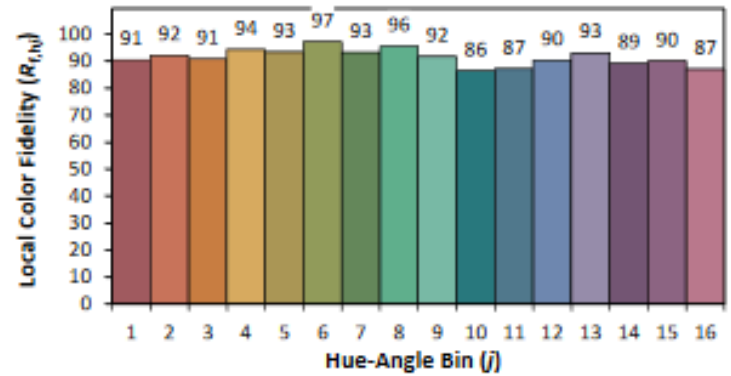
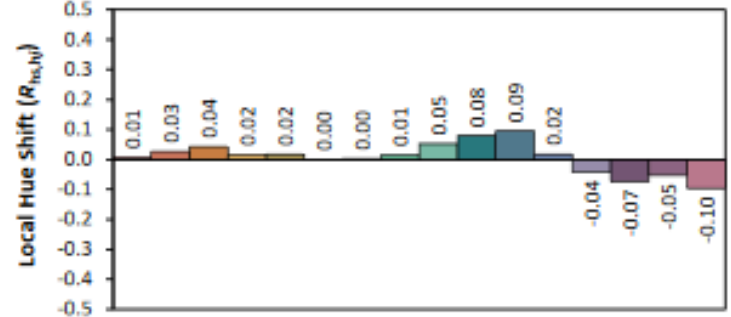
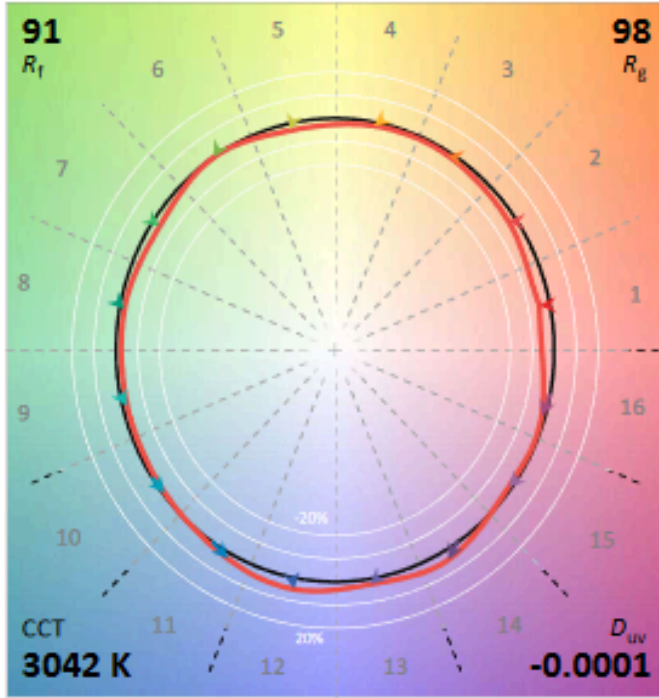
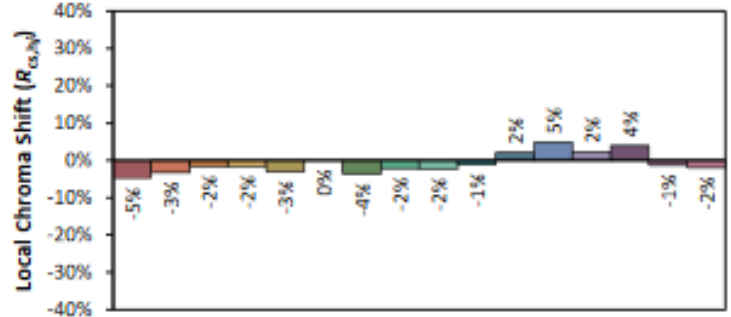
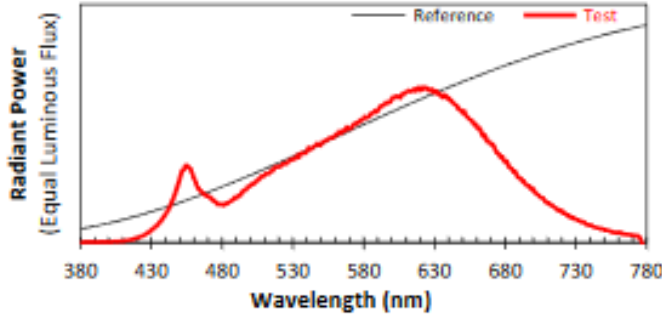


Round
Ø 5.91" (150mm)



Square
5.91" x 5.91" (150 x 150mm)

Color Specification: TM-30 for Xicato XOB 3000K CRI 90



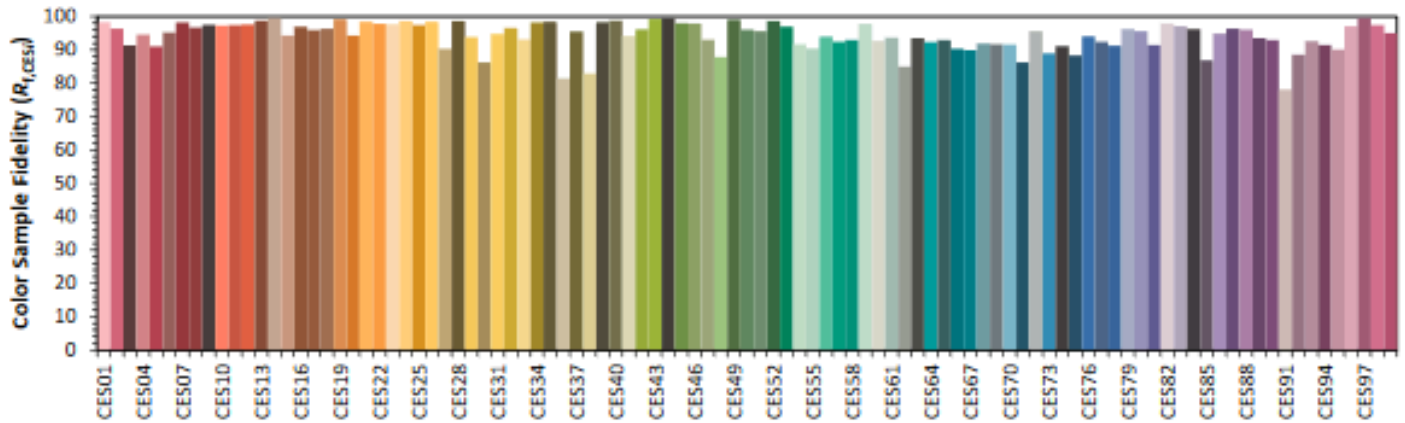
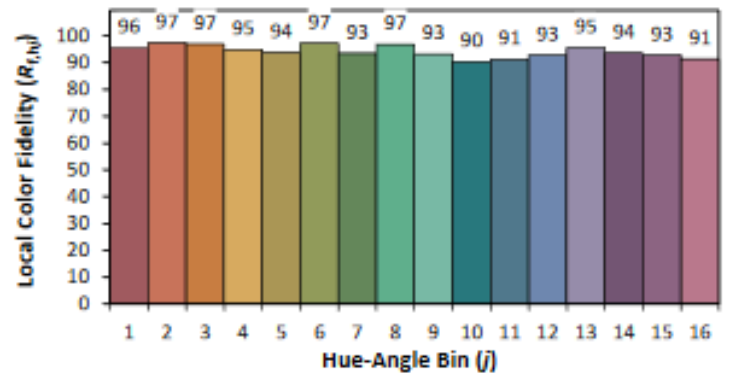
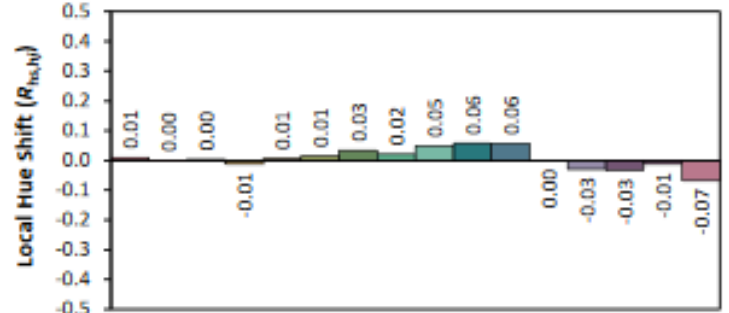
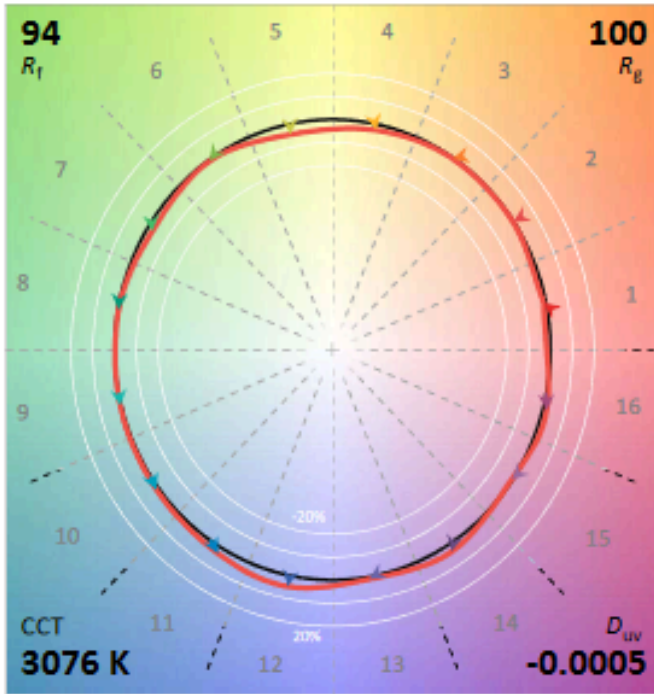
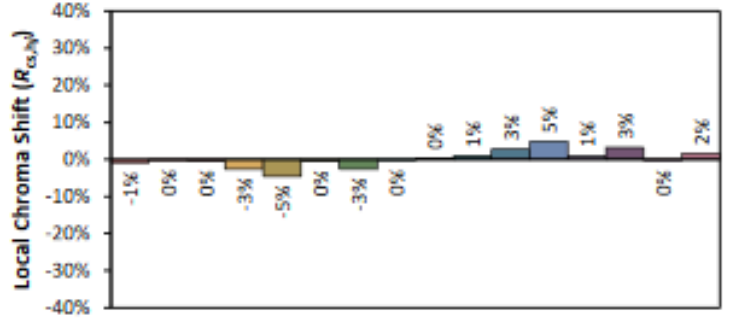
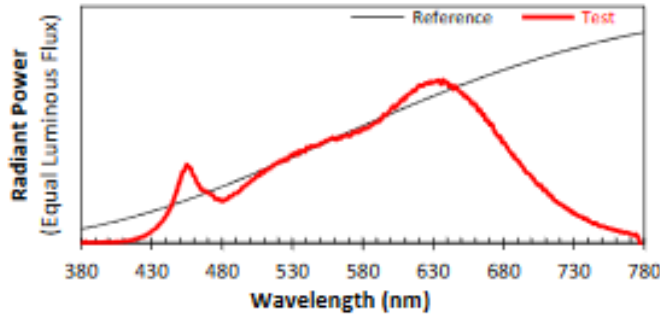
Notes: This is a recommended method for displaying IES TM-30-18 information.

x 0.4381
 y 0.4043
 u' 0.2512
 v' 0.5216

CIE 13.3-1995 (CRI)	
R _a	93
R _g	64

Colors are for visual orientation purposes only. Created with the IES TM-30-18 Calculator Version 2.0.

Color Specification: TM-30 for Xicato XOB 3000K CRI 95



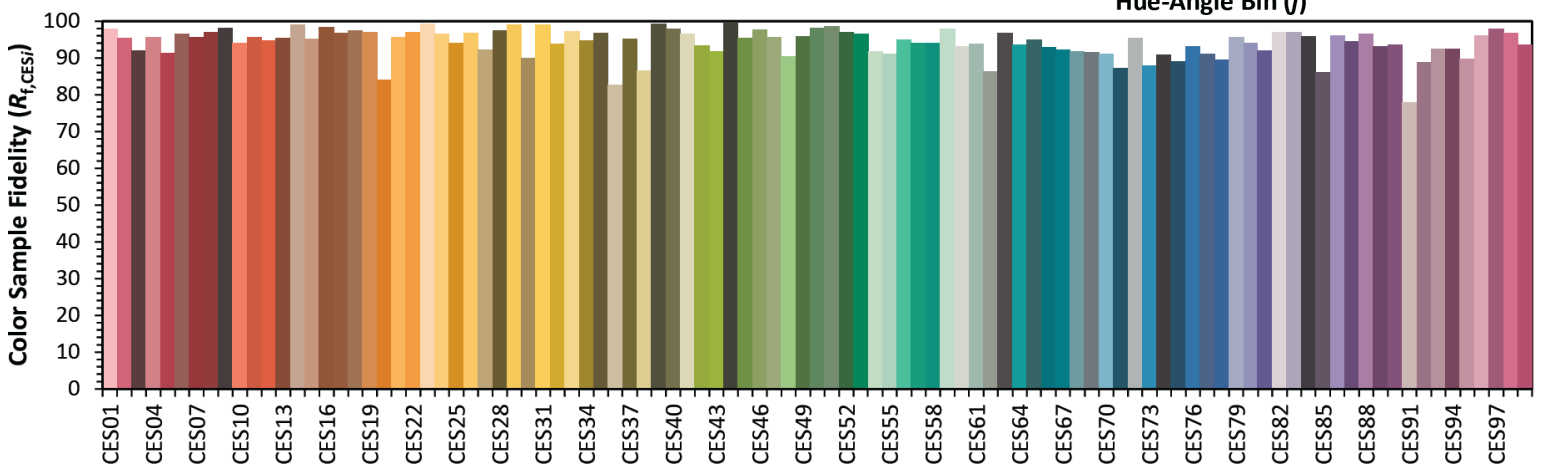
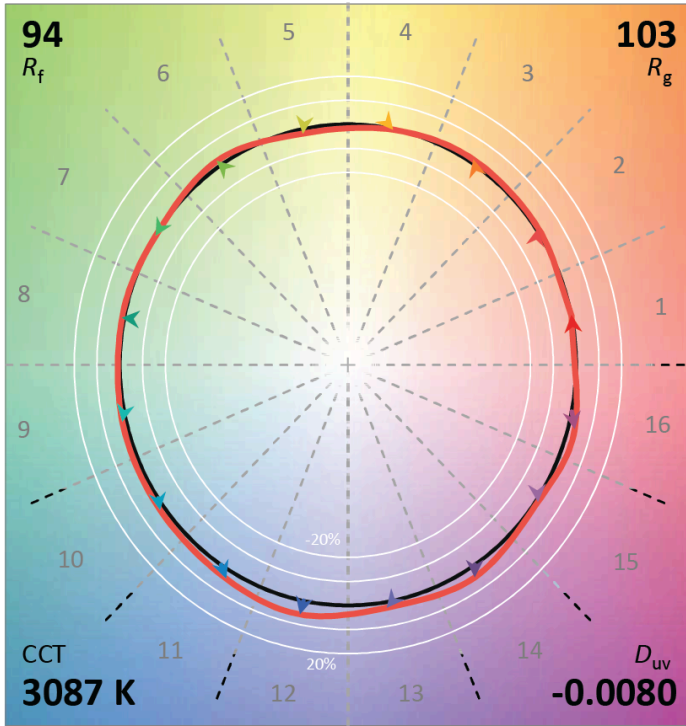
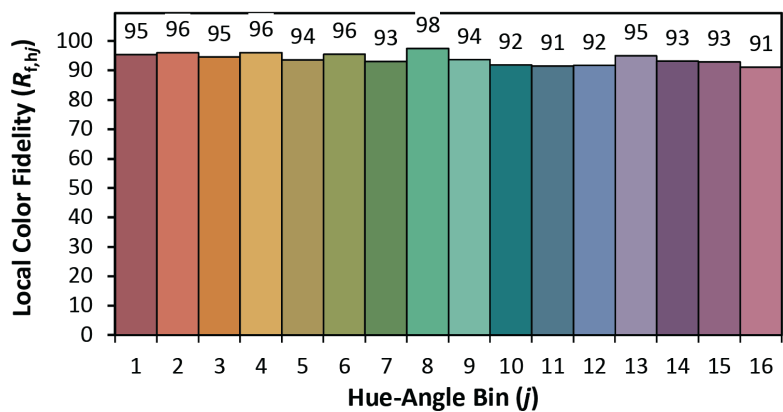
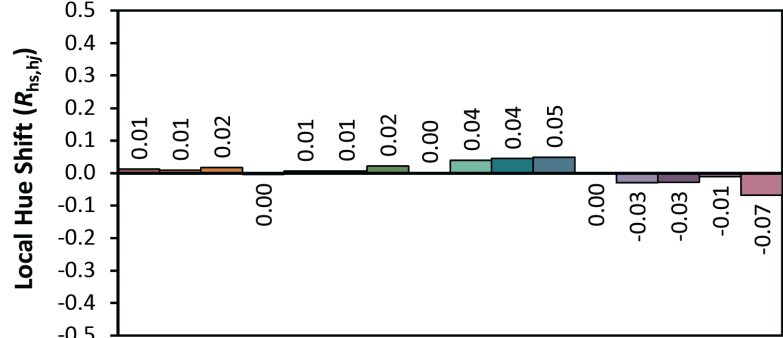
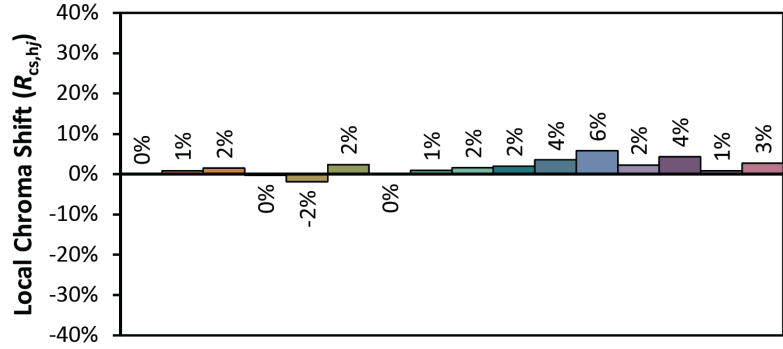
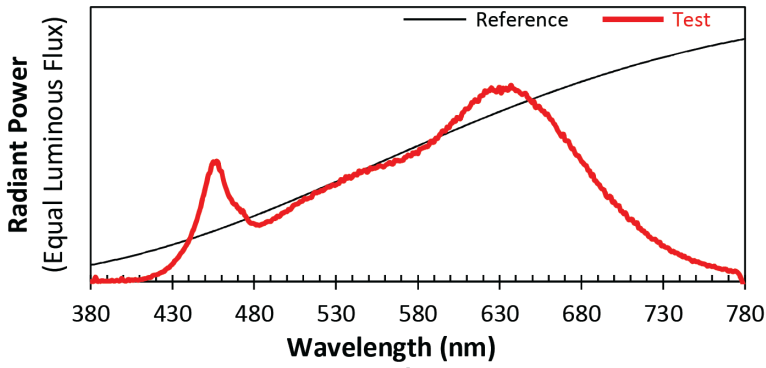
Notes: This is a recommended method for displaying IES TM-30-18 information.

x 0.4352
 y 0.4022
 u' 0.2502
 v' 0.5204

CIE 13.3-1995 (CRI)	
R _a	98
R _g	95

Colors are for visual orientation purposes only. Created with the IES TM-30-18 Calculator Version 2.0.

Color Specification: TM-30 for Xicato XOB 3000K CRI 95 Vibrant



Notes: This is a recommended method for displaying IES TM-30-18 information.

x 0.4243
y 0.3803
u' 0.2527
v' 0.5097

CIE 13.3-1995 (CRI)
 R_a 95
 R_g 92

Colors are for visual orientation purposes only. Created with the IES TM-30-18 Calculator v2.0.